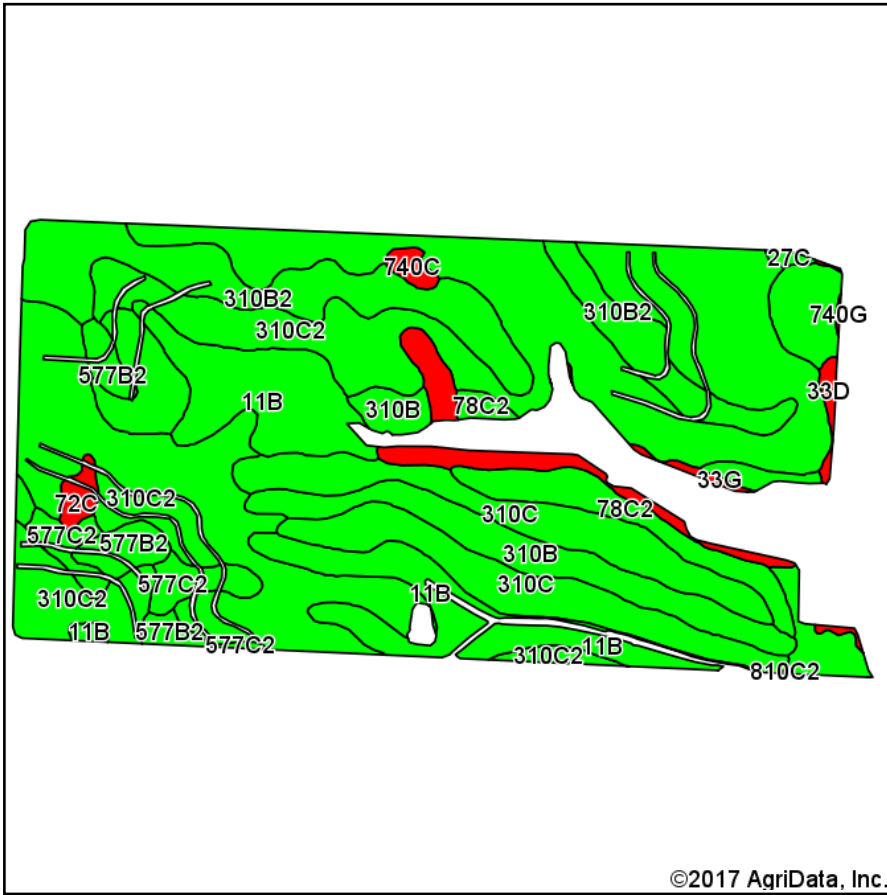
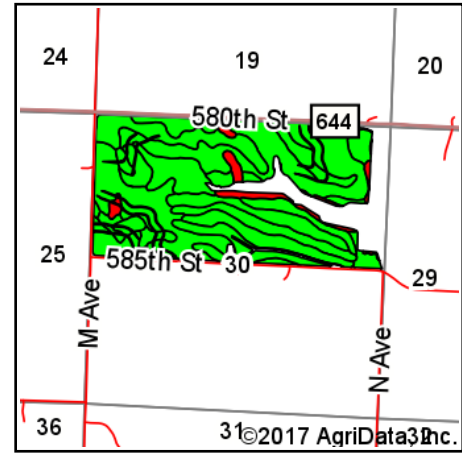


Soils Map



Soils data provided by USDA and NRCS.

©2017 AgriData, Inc.



State: **Iowa**
 County: **Cherokee**
 Location: **30-91N-40W**
 Township: **Pilot**
 Acres: **265.73**
 Date: **6/21/2017**

MIDWEST LAND
 & REAL ESTATE, INC
 712-262-3110 MANAGEMENT

Maps Provided By:

 CUSTOMIZED ONLINE MAPPING
 © AgriData, Inc. 2017 www.AgriDataInc.com



Area Symbol: IA035, Soil Area Version: 25

Code	Soil Description	Acres	Percent of field	CSR2 Legend	Non-Irr Class *c	CSR2**	CSR
310C2	Galva silty clay loam, 5 to 9 percent slopes, eroded	111.43	41.9%		IIIe	84	54
310C	Galva silty clay loam, 5 to 9 percent slopes	30.38	11.4%		IIIe	87	56
11B	Colo-Judson silty clay loams, 0 to 5 percent slopes, occasionally flooded	29.39	11.1%		IIw	80	59
310B2	Galva silty clay loam, 2 to 5 percent slopes, eroded	28.89	10.9%		Ile	90	69
310B	Galva silty clay loam, 2 to 5 percent slopes	16.31	6.1%		Ile	95	71
577C2	Everly clay loam, 5 to 9 percent slopes, moderately eroded	12.86	4.8%		IIIe	83	49
78C2	Sac silty clay loam, 5 to 9 percent slopes, eroded	9.53	3.6%		IIIe	82	50
810B	Galva silty clay loam, terrace, 2 to 5 percent slopes	8.60	3.2%		Ile	95	71
33G	Steinauer clay loam, 25 to 40 percent slopes	7.70	2.9%		VIIe	5	5
577B2	Everly clay loam, 2 to 5 percent slopes, moderately eroded	6.47	2.4%		Ile	88	59
72C	Estherville loam, 5 to 9 percent slopes	1.45	0.5%		IVs	10	24
740C	Hawick sandy loam, 2 to 9 percent slopes	1.22	0.5%		IVs	21	5
33D	Steinauer clay loam, 9 to 14 percent slopes	0.94	0.4%		IVe	33	36
27C	Terril loam, 5 to 9 percent slopes	0.47	0.2%		IIIe	85	53
740G	Hawick sandy loam, 18 to 35 percent slopes	0.09	0.0%		VIIe	5	5
Weighted Average						82.4	55.9

**IA has updated the CSR values for each county to CSR2.

*c: Using Capabilities Class Dominant Condition Aggregation Method

Soils data provided by USDA and NRCS.